

## EXPERIENCE THE LATEST SOFTWARE AND HARDWARE SOLUTIONS

### ACCUMARK 2D & 3D

*The industry's most robust Pattern design, Grading and Marker making to automate everyday tasks*

Increase Efficiency  
Seamless Integration  
Improve Collaboration  
Save Time and Money

### YUNIQUEPLM

*Accelerates time to market, reduces lead times and improves margin*

Cloud Based  
Flexible and Scalable  
Speed and Affordability  
Synchronized Communication

### CAM SOLUTIONS

*Next generation cutting and spreading equipment that is simple by design*

More Uptime  
More Precision  
More Profitability  
More Throughput

PROMO CODE:  
**ATRIA**



Intamarket Technology  
4 Carey Street, Sandton  
Johannesburg, 2090  
0800 110 679

**Please use promo code ATRIA. Subject to Intamarket's Standard Terms and Conditions.**  
This promotion is valid for the duration of the ALLFASHION show only.

JHB - +27 (0)11 444 0404  
DUR - +27 (0)81 701 8894  
CPT - +27 (0)21 552 7292

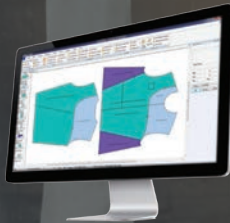
## ABOUT INTAMARKET TECHNOLOGY

Intamarket Technology has been a supplier of PLM and CAD/CAM solutions to manufacturers and retailers of sewn goods and flexible materials for over 40 years. Intamarket Technology has an established national sales and support structure with offices in Johannesburg, Durban and Cape Town, and boasts a dedicated team of internationally trained sales personnel and engineers to collaborate with our customers to understand their changing needs and design solutions accordingly.

Intamarket Technology understands the stringent requirements and pressures applied to the South African manufacturing facilities in today's highly competitive environment. We aim to help companies achieve their productivity goals while ensuring a lower total cost of ownership. Innovation goes beyond our products and is in the work culture we promote, the solutions we tailor for industries and the service we offer our customers. Long-term partnering has been our key differentiating factor, and our unparalleled customer service and loyalty is one of the reasons Intamarket Technology continues to grow and succeed in the manufacturing sector.

WORKING TO HELP YOU  
REACH YOUR OPTIMUM.

Gerber helps take your design room to the next level. With proven solutions like AccuMark, AccuMark 3D, AccuNest, AccuPlan, YuniquePLM, YuniquePLM In The Cloud, YuSnap, the MP Series Plotter, the SP-120 Plotter and the Silhouette Table, you can drive efficiency, shorten cycle times, enhance workflow, automate critical processes and improve global collaboration.



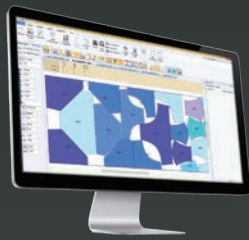
***AccuMark***

AccuMark is the industry standard in CAD for the fashion and apparel industry with more than 46,000 users worldwide. AccuMark is a complete family of products including AccuMark 2D, 3D, AccuNest and AccuPlan all integrating seamlessly to improve workflow. AccuMark 10.1 accelerates the workflow process while reducing costs and increasing agility by increasing pattern development by up to 10% and processing markers by 5%.



***AccuMark 3D***

Designed for those who are looking to bring new efficiencies and a higher level of collaboration to their entire production process, AccuMark 3D enables virtual sampling and substantial time and cost savings. Customers can expect a ROI within a few months of full implementation. Additionally, AccuMark 3D integrates with YuniquePLM to ensure data accuracy all while bringing your products to market more quickly.



## AccuNest

This automated high-speed nesting system dramatically accelerates the marker making process and cuts costs by utilizing advanced algorithms to analyze multiple nesting solutions and delivering the highest material utilization.



## AccuPlan

AccuPlan leverages existing marker libraries and labor cost details so real-time results can be calculated based on the company's specific needs. Planning multiple cut orders by communicating with ERP systems and generating reports based on cost, cut plan, marker list and fabric consumption can increase throughput by 50%.



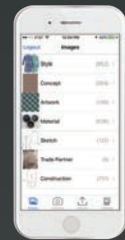
## YuniquePLM

YuniquePLM is the hub of our digital solution, making the complex simple by providing a single version of the truth. Fashion industry best practices are built into the core application to help improve your efficiency, collaboration and integration. V7 helps our customers work smarter not harder, leveraging real-time notifications to improve communication as changes are made.



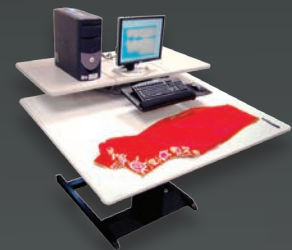
## YuniquePLM In The Cloud

This cloud-based version of YuniquePLM combines the functionality of an industry-leading PLM solution and the speed, scalability, universal access and lower cost of ownership of cloud computing.



## YuSnap Mobile App

Inspiration can strike anytime. With our YuSnap Mobile App, design, development and sales teams can easily capture and share digital photos while they're on the go. This intuitive app accelerates product development and promotes communication and collaboration. It allows you to capture inspirations and directly sync them to YuniquePLM.



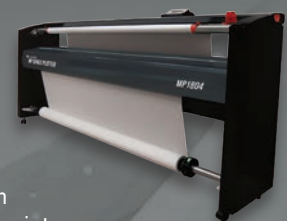
## Silhouette Table

Need help accelerating the pattern design process in your design room? Utilize the Silhouette table to draw or trace images and they are automatically converted to digital patterns used to make markers instantly.



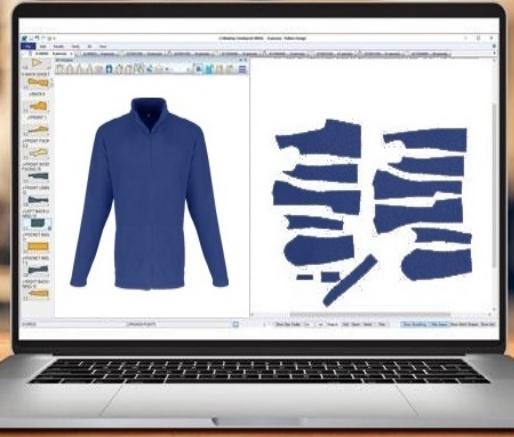
## SP-120 Plotter

Specially designed for plotting and cutting pattern pieces from a single unit without changing tools, the SP-120 plotter is ideal for design centers and in-house design departments. With high-speed plotting and high cutting accuracy, the SP-120 frees designers from the tedious, repetitive, and time consuming task of cutting patterns and allows them to focus on design functions.



## MP Series Plotter

For the design room or cut room looking for a marker plotter that prints quickly, quietly, and affordably, the MP Series delivers on all fronts with an ROI in less than a year. The MP Series can print on paper as light as 20 grams, saving users up to 50% on consumables compared to standard 35 pound paper. It's sealed structure, precision crafted parts, and sleek design ensure long term reliability while still blending into the trendiest office spaces.



ACCUMARK'S POWERFUL QUALITY CONTROL, COMMUNICATION AND TIME-SAVING FUNCTIONS HELP BRAND OWNERS AND MANUFACTURERS MAXIMIZE PRODUCTIVITY, MINIMIZE WASTE AND MAINTAIN STRICT BRAND GUIDELINES.

ACCUMARK® 3D TAKES THIS TIME-TESTED SOFTWARE TO A WHOLE NEW DIMENSION, ENABLING YOU TO UNLEASH YOUR CREATIVE VISION, ACCELERATE YOUR DESIGN PROCESS AND PROMOTE GLOBAL COLLABORATION.

"The ability to develop in 3D production-ready samples, with the correct fit and the cost estimation, has allowed me to reduce the number of physical samples I have to make from 20 to 5, saving me about 75% in development time."

- Darren Beaman, Adrian Jules Custom Clothier

"The new tools around colorways and 3D editing streamline the design workflow all the way to production. Our designers can use the concise image functionality in 3D to quickly align graphic placement."

- Tobe Bashor, Digital Performance Gear

Enhance fit and increase productivity with seamless 2D-to-3D integration.

Create true-to-life virtual samples.  
Generate better and more diverse design ideas.

ON AVERAGE, ACCUMARK 3D USERS GO FROM

**75%**  
SAMPLES SAVINGS  
**PRODUCE FEWER SAMPLES**

**3WKS** TO **48HRS**  
**VISUALISE YOUR DESIGNS QUICKER**

**\$50 K**  
INCREASED REVENUE  
**PRODUCE FEWER ERRORS**

### Seamless integration.

- Share data seamlessly from PLM to 2D patterns and 3D simulations and back to 2D patterns without any data loss. Keeping all data in one connected system saves you time and produces more accurate cut parts.
- Seamless integration with AccuMark Pattern Design Software (PDS) to increase speed to market from design to production.
- Leverage the powerful Avametric simulation engine from the leaders in fabric simulation.
- Validate fit using turntables to get a complete view of the garment.
- Fine tune fit with a combination of changing pose avatars as well as tension and pressure maps.

### Increase efficiency.

- Accelerate your production process and meet tighter deadlines, while reducing costs and increasing agility, by creating true-to-life virtual samples to visualize garment design and validate patterns in 3D.
- Simulate graded samples to validate fit and design for your entire size range.
- Place and modify images on the 3D garment, then sync the changes back to your AccuMark data.
- Correct fit problems and change style details, add new pieces and quickly validate changes in the 3D simulation.
- Simple drag-and-drop functionality makes it easy to change fabrics.
- View advanced texture images as well as trim and edge finishes on the avatar with Material (Default) View.

- Add more details and realism to your simulations with 3D accessories such as buttons, for realistic visual samples.
- Save time and reduce errors with the only platform that offers colorways, image libraries, editing and image placement capabilities in 2D and 3D in a seamless and efficient workflow.

### Improve collaboration.

- Collaborate better with your entire development and production team, and promote interaction and teamwork.
- Create presentation ready images with the click of a button.
- Become more responsive to your customers' needs.

### Save time and money.

- Deliver a higher quality product at better cost.
- Attain greater control of the entire product lifecycle.
- Catch fit issues digitally to arrive at production-approved samples faster and reduce the number of costly physical samples.
- Reduce your time to market by providing realistic digital renderings of your design from concept to finished product.
- A cycle that takes 12-16 weeks becomes 3-4 weeks using 3D in the early stages of development and sampling.
- Gain efficiencies through integration with the AccuMark suite, as well as YuniquePLM.

## • PLAN

Synchronize your product lines and financial plans to maximize productivity and give your design, development and sales teams the ability to easily capture and share digital photos while on the go with the YuSnap™ App.

## • DESIGN

Create and manage digital assets without leaving Adobe® Illustrator® and leverage the power of AccuMark® 3D to go from patterns, to 3D virtual sample, to production ready garments in about half the time it takes for a traditional non-digital process.

## • DEVELOP

Leverage real-time notifications to communicate changes globally to users and integrate seamlessly with AccuMark 2D for accurate, precise planning that can cut weeks off your product development time.

## • SOURCE

Collaborate with your supply chain to keep products on time and on budget.

## • PRODUCE

Streamline workflows and reduce production costs.

## • TRACK

Manage key milestones for real-time status of critical path activities.

## • REPORT

Access data from graphical dashboards to make smart business decisions.

# MAXIMIZE



# YOUR PRODUCT LIFE CYCLE

[inta@intamarket.co.za](mailto:inta@intamarket.co.za)

[www.intamarket-technology.co.za](http://www.intamarket-technology.co.za)

Intamarket Technology, 4 Carey Street, Sandton, Johannesburg, 2090, 0800 110 679

DUR - +27 (0)31 701 8894

JHB - +27 (0)11 444 0404

CPT - +27 (0)21 552 7292

THE NEXT GENERATION OF  
**NOW**

The heart of the factory. The soul of mass production.



 GERBER  
***ATRIA CUTTER***

**intamarket**  
TECHNOLOGY



EXPERIENCE THE INDUSTRY  
OF THE FUTURE, TODAY.

**The Gerber Atria Cutter integrates  
fully-realized, advanced technology  
for digital cutting.**

With innovation in our DNA, we listened to our customers and developed the most advanced, high-performing, digital multi-ply cutter on the market that offers a truly unique experience.

Backed by our integrated, end-to-end platform and a global network of experts serving 134 countries, the Gerber Atria Cutter is sure to be the brightest star in any cut room.

## GO END-TO-END WITH A FULLY-INTEGRATED DIGITAL SOLUTION FOR MASS PRODUCTION.

From apparel to automotive interiors to upholstered furniture to personal protective equipment (PPE), consumers across all industries have specific expectations. They expect the highest quality products delivered more quickly than ever before at the best price and produced in the most sustainable way, making it difficult to keep up. So how can manufacturers exceed the expectations of contractors and end consumers while reducing time to market and remaining cost effective?

With over 50 years of industry excellence, Gerber Technology has the broad expertise to understand the challenges manufacturers have to overcome in order to be successful and can provide best practices to help their customers conquer those challenges. As the leader of connected platforms, Gerber's powerful ecosystem of software and hardware solutions allows companies of all sizes to make mass production faster, sustainable, and more efficient than ever before by leveraging the most advanced technology to connect the supply chain from order to production for a truly seamless process. Gerber is continuing to build on an innovative heritage and is transforming the supply chain with the next generation of powerful cutting solutions, starting with the Gerber Atria Cutter.

## MASS PRODUCTION MADE FAST AND EFFICIENT.

As the world adapts to a new reality, you need to rethink and reorganize your supply chain in order to survive. Those who leverage the most advanced technology will be able to create a dynamic, end-to-end process that will allow them to thrive and survive through the changing needs of consumers.

Manufacturers of all industries are in dire need of a powerful cutting solution that can produce quality, sustainable products at a high level. With unmatched throughput, zero buffer cutting capabilities, and the ability to maximize ply height with even the toughest materials, the Gerber Atria Cutter is transforming the next generation of mass production.



PLAN



DESIGN



DEVELOP



PRODUCE



## IoT IS AT THE HEART OF ATRIA.

The Gerber Atria Cutter is equipped with more sensors and production capabilities, making it Gerber's smartest and most connected machine ever. The robust, easy-to-use, intuitive cutting solution is programmed with advanced algorithms and seamlessly integrates with your CAD/CAM solution for an optimized, digital workflow with precision cutting, unmatched speed and reduced errors.

### NOISE INSULATED ENCLOSURE

Ensure quiet, worker-friendly operations.

### DYNAMICALLY ADJUSTED RESEALER

Improve cut quality, throughput, and energy use by ensuring vacuum stability.

### HYDRAULIC LIFT CTOT

Makes it easy for one person to perform maintenance.

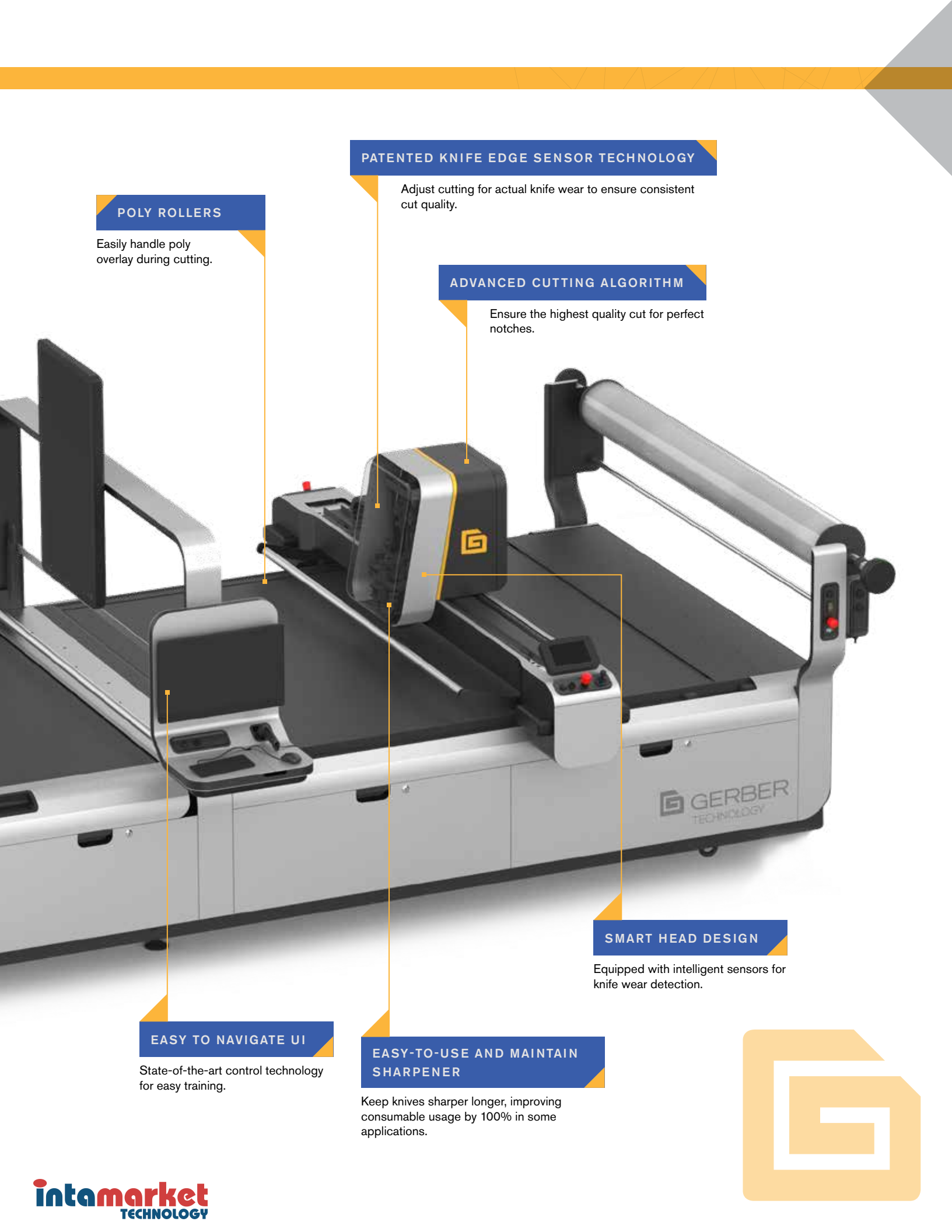
### POWERFUL VACUUM FOR 50% MORE THROUGHPUT

Double your throughput with an optional vacuum.

### SLEEK, DURABLE DESIGN

Improved user experience designed for the operator.





**POLY ROLLERS**

Easily handle poly overlay during cutting.

**PATENTED KNIFE EDGE SENSOR TECHNOLOGY**

Adjust cutting for actual knife wear to ensure consistent cut quality.

**ADVANCED CUTTING ALGORITHM**

Ensure the highest quality cut for perfect notches.

**SMART HEAD DESIGN**

Equipped with intelligent sensors for knife wear detection.

**EASY TO NAVIGATE UI**

State-of-the-art control technology for easy training.

**EASY-TO-USE AND MAINTAIN SHARPENER**

Keep knives sharper longer, improving consumable usage by 100% in some applications.



# A STATE-OF-THE-ART CUTTING SOLUTION FOR EVERY CHALLENGE.

Every industry has very specific challenges they need to overcome, so Gerber delivers a versatile solution that can solve practically every pain point in the process. Whether you have a strict deadline, need a more sustainable process, or are struggling to quickly develop products, the Gerber Atria Cutter can help you do it all.

## MEET INDUSTRY STANDARDS EVERY, SINGLE, TIME.

The true power solution for the transportation industry.

With strict industry standards there's no time to waste on rejected cut parts, so why not get it right the first time? With smooth motion, advanced cutting algorithms and integration with Gerber's end-to-end platform, the Gerber Atria Cutter ensures transportation manufacturers are able to efficiently cut high-quality parts that meet industry standards every single time. The easy-to-use solution increases throughput, reduces errors and minimizes labor costs, making for a truly innovative experience.



## GET YOUR PRODUCTS TO MARKET QUICKLY AND SUSTAINABLY.

The hardest-working solution from denim to workwear.

Whether you're manufacturing denim, synthetics or workwear, you need a solution that will allow you to be sustainable and cost effective while also getting your products to market quickly. The Gerber Atria Cutter optimizes the entire supply by seamlessly passing data from your 2D/3D CAD/CAM and PLM solutions directly to the powerful cutting solution, getting your products to market faster than ever before while reducing material waste by as much as 40%. With zero buffer cutting, optimized nesting and the ability to maximize ply height with even the toughest materials, you can rest assured knowing you're delivering high-quality, sustainable products that are meant to last.



## FROM MASS PRODUCTION TO CUSTOMIZATION, WE HAVE YOU COVERED.

A flexible, production workhorse for upholstered furniture.

While mass production is still the main workflow for upholstered furniture, as Generation Z, which doesn't like to prescribe to pre-defined trends, begins to enter the housing market, the need for customized furniture will rise. The Gerber Atria Cutter makes both of these workflows possible with powerful algorithms that make it easy to precisely cut a variety of fabrics including vegan leather. Through an intuitive interface and enhanced IoT connectivity, the Atria Cutter gives manufacturers complete control over their process from design through production, making it simple to manage costs and pricing while still delivering products to the market at a rapid rate.



## SAVE TIME, SAVE MORE LIVES.

A fast, efficient process for the highest quality protective equipment.

Due to the complexity of materials used to produce protective equipment, manufacturers need a dynamic process that will allow them to efficiently produce an effective final product. The Gerber Atria Cutter connects the entire supply chain from design through production, allowing manufacturers to quickly and sustainably produce 500,000 protective masks and 150,000 medical gowns per day while reducing material waste by 30%.



## SERVICE AND SUPPORT YOU CAN RELY ON.

Technology and innovation are a core part of Gerber's DNA, making us the #1 choice for companies all around the world. With vast industry experience and a global network of Gerber Certified Professionals, you can rest easy knowing you'll always have access to the service, support, parts, and consumables you need to keep your machine up and running at peak performance.

### 1-YEAR WARRANTY TO KEEP YOUR SYSTEM RUNNING AT OPTIMUM PERFORMANCE.

To ensure your system is always operating at optimum performance, every Gerber Atria Cutter comes with a one-year warranty which includes all replacement parts, labor, one preventative maintenance per year, and discounts on additional training.



### A SERVICE CONTRACT YOU CAN COUNT ON.

Our Prime Service Contracts ensure you get the Gerber Certified service, support and parts you need to keep your machine up and running at optimum performance. Prime Service Contracts are offered in three different plans, giving you the opportunity to choose the right level of support that best suits the needs of your business. Our plans include a Full Service Agreement, a Preventative Maintenance & Parts Support Agreement, and a Remote Support Agreement.



### GERBERCONNECT™ OFFERS THE REMOTE DIAGNOSTICS YOU NEED TO STAY UP AND RUNNING.

Gerber understands how important your cutting solution is to your workflow and how downtime can negatively affect your entire process. The IoT-enabled Gerber Atria Cutter is equipped with sensors and production reporting capabilities through Gerber's service and reporting feature, GERBERconnect, offering you a number of options to get the data you need to optimize your production, decrease downtime and reach operational excellence. Every GERBERcutter® is also equipped with several AI capabilities and remote support options, such as, Augmented Reality and Remote Control, to allow Field Service Engineers to diagnose, and even repair, problems without ever having to visit your facility.



### INDUSTRY-LEADING CONSULTING, TRAINING AND SUPPORT TO ENSURE SUCCESS.

While it's important to have the latest technology, it's even more important to know how to effectively implement it into your current workflow. Through Gerber's Consulting Services, a team of Gerber Experts will help you optimize your supply chain from design through production by providing advice, best practices and training to help you be successful. You'll also have access to Gerber's online learning platform, Gerber University, to ensure you get the most out of your Gerber system.



### GERBER CERTIFIED PARTS AND CONSUMABLES FOR THE ATRIA CUTTER.

Gerber Certified parts and consumables are the only parts designed specifically for your Gerber system. All Gerber Certified parts and consumables are reviewed, tested and updated to meet quality standards and keep your machine running at optimum performance with maximum throughput, improving total cost of ownership.

